

6' Dye Sub Ultra Fit Throw (Full Bleed)

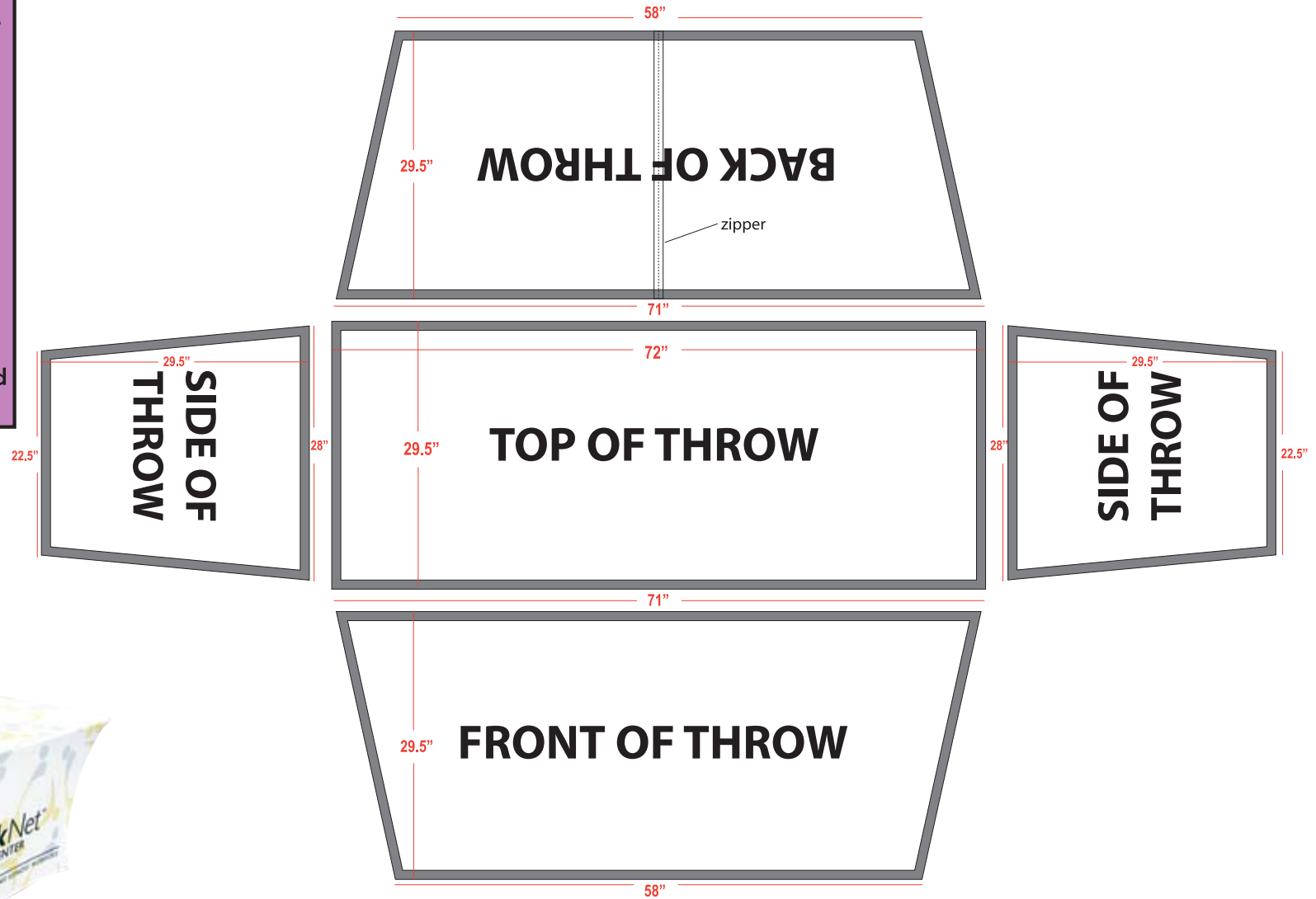
*Allow 1/2" on each side of the zipper for sewing

*Keep all text and images 1" away from all sides

*PMS color matching is not guaranteed.

*Dye Sub products are printed CMYK (4 color) process from your file.

*All images must be embedded and all fonts must be outlined



ACCEPTABLE FILE FORMATS:



Vector lines



Vector image

- * Adobe Illustrator (.ai, .pdf, .eps)
- * All Fonts Outlined/Images embedded



Raster image

- *100 DPI AT 100%
- *Adobe Photoshop - .psd
.tif, or .jpg

Updated: 1.23.9